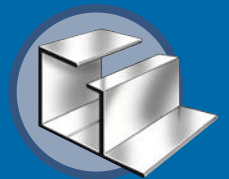
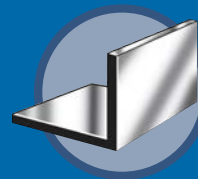
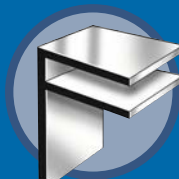
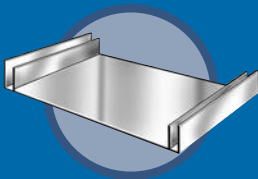
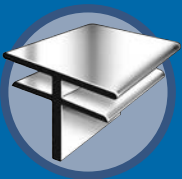


EX SIGN EXTRUSIONS



RIGHT SHAPES

RIGHT PRICE

RIGHT NOW



DRAWING	PART NUMBER	DESCRIPTION
	SE 1001	<p>EX-1 CHANNEL 6" WITH 1/4" SLOT</p> <p>LENGTH FINISH</p> <p><u>24'-3" (291")</u> <u>AN, ML</u></p>
	SE 1002	<p>EX-2 CHANNEL BOX FRAME 7 1/2"</p> <p>LENGTH FINISH</p> <p><u>24'-3" (291")</u> <u>AN, ML</u></p>
	SE 1003	<p>EX-3 ANGLE 1" x 1" x .062"</p> <p>LENGTH FINISH</p> <p><u>24'-3" (291")</u> <u>AN, ML</u></p>
	SE 1005	<p>EX-5 F-CHANNEL 1 1/2" x 1" x 1/4" SLOT</p> <p>LENGTH FINISH</p> <p><u>24'-3" (291")</u> <u>AN, ML</u></p>
	SE 1006	<p>EX-6 ANGLE 1 1/4" x 1 1/4" x .093"</p> <p>LENGTH FINISH</p> <p><u>24'-3" (291")</u> <u>AN, ML</u></p>

NOTE: Additional finishes available on request.

FINISHES: AN-Anodized, ML-Mill



DRAWING	PART NUMBER	DESCRIPTION				
	SE 1007	<p>EX-7 FRAME 1 1/2" FACE</p> <table> <tr> <td>LENGTH</td> <td>FINISH</td> </tr> <tr> <td>24'-3" (291")</td> <td>AN, ML</td> </tr> </table>	LENGTH	FINISH	24'-3" (291")	AN, ML
LENGTH	FINISH					
24'-3" (291")	AN, ML					
	SE 1008	<p>EX-8 CHANNEL 8.125" x 1/4" SLOT</p> <table> <tr> <td>LENGTH</td> <td>FINISH</td> </tr> <tr> <td>24'-3" (291")</td> <td>AN, ML</td> </tr> </table>	LENGTH	FINISH	24'-3" (291")	AN, ML
LENGTH	FINISH					
24'-3" (291")	AN, ML					
	SE 1011	<p>EX-11 DIVIDER 1.625" x 1.2"</p> <table> <tr> <td>LENGTH</td> <td>FINISH</td> </tr> <tr> <td>24'-3" (291")</td> <td>AN, ML</td> </tr> </table>	LENGTH	FINISH	24'-3" (291")	AN, ML
LENGTH	FINISH					
24'-3" (291")	AN, ML					
	SE 1012	<p>EX-12 FRAME 1" FACE</p> <table> <tr> <td>LENGTH</td> <td>FINISH</td> </tr> <tr> <td>24'-3" (291")</td> <td>AN, ML</td> </tr> </table>	LENGTH	FINISH	24'-3" (291")	AN, ML
LENGTH	FINISH					
24'-3" (291")	AN, ML					

NOTE: Additional finishes available on request.

FINISHES: AN-Anodized, ML-Mill



DRAWING	PART NUMBER	DESCRIPTION				
	SE 1013	<p>EX-13 FRAME 2.25" FACE</p> <table border="1"> <thead> <tr> <th>LENGTH</th> <th>FINISH</th> </tr> </thead> <tbody> <tr> <td>24'-3" (291")</td> <td>AN, ML</td> </tr> </tbody> </table>	LENGTH	FINISH	24'-3" (291")	AN, ML
LENGTH	FINISH					
24'-3" (291")	AN, ML					
	SE 1014	<p>EX-14 CHANNEL 4" WITH 1/4" SLOT</p> <table border="1"> <thead> <tr> <th>LENGTH</th> <th>FINISH</th> </tr> </thead> <tbody> <tr> <td>24'-3" (291")</td> <td>AN, ML</td> </tr> </tbody> </table>	LENGTH	FINISH	24'-3" (291")	AN, ML
LENGTH	FINISH					
24'-3" (291")	AN, ML					

NOTE: Additional finishes available on request.

FINISHES: AN-Anodized, ML-Mill