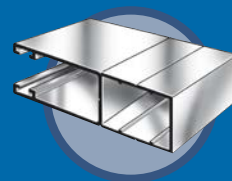
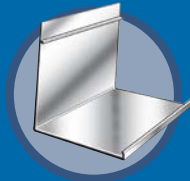
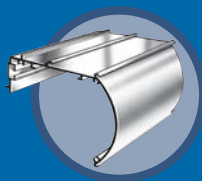
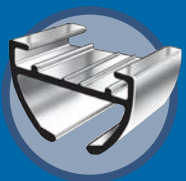


**EXTRUDE·A·TRIM**  
*The Aluminum Warehouse*

# ROLLER SHADE EXTRUSIONS

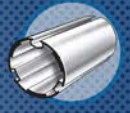
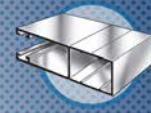


---

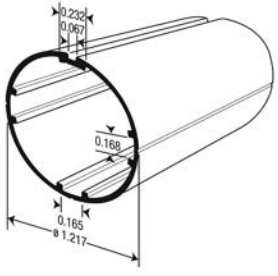
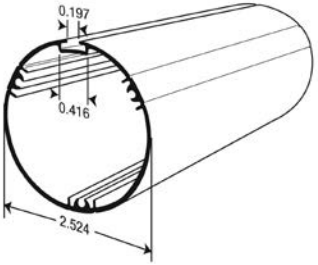
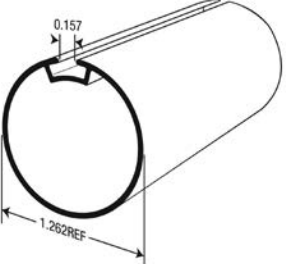
**RIGHT SHAPES** |

**RIGHT PRICE** |

**RIGHT NOW**



**ROLLER SHADE EXTRUSIONS**

DRAWING	PART NUMBER	DESCRIPTION				
	CP 0109	<p>1.18" TUBE</p> <table border="1"> <thead> <tr> <th>LENGTH</th> <th>FINISH</th> </tr> </thead> <tbody> <tr> <td>194"</td> <td>ML</td> </tr> </tbody> </table>	LENGTH	FINISH	194"	ML
LENGTH	FINISH					
194"	ML					
	CP 7915*	<p>2.5" TUBE</p> <table border="1"> <thead> <tr> <th>LENGTH</th> <th>FINISH</th> </tr> </thead> <tbody> <tr> <td>236"</td> <td>ML</td> </tr> </tbody> </table>	LENGTH	FINISH	236"	ML
LENGTH	FINISH					
236"	ML					
	FR 7004	<p>1.26" TUBE</p> <table border="1"> <thead> <tr> <th>LENGTH</th> <th>FINISH</th> </tr> </thead> <tbody> <tr> <td>183", 196"</td> <td>ML</td> </tr> </tbody> </table>	LENGTH	FINISH	183", 196"	ML
LENGTH	FINISH					
183", 196"	ML					

\*Min. 550 lb order qty.

**NOTE:** Additional finishes available on request.

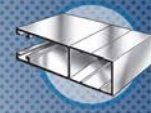
**FINISHES:** ML-Mill

CUSTOMER SERVICE • PHONE: 888-501-8689 FAX: (416) 798-1094

11/22

info@extrude-a-trim.com www.extrude-a-trim.com

9-1

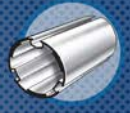


**ROLLER SHADE EXTRUSIONS**

DRAWING	PART NUMBER	DESCRIPTION				
	FR 7006	<p>1.5" TUBE</p> <table border="1"> <tr> <th>LENGTH</th> <th>FINISH</th> </tr> <tr> <td>196"</td> <td>ML</td> </tr> </table>	LENGTH	FINISH	196"	ML
LENGTH	FINISH					
196"	ML					
	FR 7007	<p>1.75" TUBE</p> <table border="1"> <tr> <th>LENGTH</th> <th>FINISH</th> </tr> <tr> <td>236"</td> <td>ML</td> </tr> </table>	LENGTH	FINISH	236"	ML
LENGTH	FINISH					
236"	ML					
	FR 7010	<p>3" HEADER</p> <table border="1"> <tr> <th>LENGTH</th> <th>FINISH</th> </tr> <tr> <td>196"</td> <td>AN, BK, CR, DB, ML, WH</td> </tr> </table>	LENGTH	FINISH	196"	AN, BK, CR, DB, ML, WH
LENGTH	FINISH					
196"	AN, BK, CR, DB, ML, WH					
	FR 7011	<p>2.5" HEADER</p> <table border="1"> <tr> <th>LENGTH</th> <th>FINISH</th> </tr> <tr> <td>144"</td> <td>AN, BK, CR, DB, ML, WH</td> </tr> </table>	LENGTH	FINISH	144"	AN, BK, CR, DB, ML, WH
LENGTH	FINISH					
144"	AN, BK, CR, DB, ML, WH					

**NOTE:** Additional finishes available on request.

**FINISHES:** AN-Anodized, BK-Brite Black, CR-Cream, DB-Dark Bronze, ML-Mill, WH-White



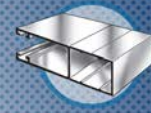
**ROLLER SHADE EXTRUSIONS**

DRAWING	PART NUMBER	DESCRIPTION				
	CP 7266	<p>3" FASCIA</p> <table border="1"> <tr> <td><b>LENGTH</b></td> <td><b>FINISH</b></td> </tr> <tr> <td>236"</td> <td>AN, WH</td> </tr> </table>	<b>LENGTH</b>	<b>FINISH</b>	236"	AN, WH
<b>LENGTH</b>	<b>FINISH</b>					
236"	AN, WH					
	CP 7900	<p>4" FASCIA</p> <table border="1"> <tr> <td><b>LENGTH</b></td> <td><b>FINISH</b></td> </tr> <tr> <td>236"</td> <td>AN</td> </tr> </table>	<b>LENGTH</b>	<b>FINISH</b>	236"	AN
<b>LENGTH</b>	<b>FINISH</b>					
236"	AN					
	CP 0501	<p>BOTTOM WEIGHT BAR</p> <table border="1"> <tr> <td><b>LENGTH</b></td> <td><b>FINISH</b></td> </tr> <tr> <td>196"</td> <td>ML</td> </tr> </table>	<b>LENGTH</b>	<b>FINISH</b>	196"	ML
<b>LENGTH</b>	<b>FINISH</b>					
196"	ML					
	CP 1013	<p>BOTTOM WEIGHT BAR</p> <table border="1"> <tr> <td><b>LENGTH</b></td> <td><b>FINISH</b></td> </tr> <tr> <td>196"</td> <td>AB, AN, BK, DB, WH</td> </tr> </table>	<b>LENGTH</b>	<b>FINISH</b>	196"	AB, AN, BK, DB, WH
<b>LENGTH</b>	<b>FINISH</b>					
196"	AB, AN, BK, DB, WH					

**NOTE:** Additional finishes available on request.

**FINISHES:** AB-Alabaster, AN-Anodized, BK-Brite Black, DB-Dark Bronze, ML-Mill, WH-White





**ROLLER SHADE EXTRUSIONS**

DRAWING	PART NUMBER	DESCRIPTION				
	FR 7025	<p>BOTTOM WEIGHT BAR</p> <table border="1"> <tr> <td><b>LENGTH</b></td> <td><b>FINISH</b></td> </tr> <tr> <td>196"</td> <td>AN, WH</td> </tr> </table>	<b>LENGTH</b>	<b>FINISH</b>	196"	AN, WH
<b>LENGTH</b>	<b>FINISH</b>					
196"	AN, WH					
	CP 6010	<p>CEILING TRACK</p> <table border="1"> <tr> <td><b>LENGTH</b></td> <td><b>FINISH</b></td> </tr> <tr> <td>236"</td> <td>AN</td> </tr> </table>	<b>LENGTH</b>	<b>FINISH</b>	236"	AN
<b>LENGTH</b>	<b>FINISH</b>					
236"	AN					
	CP 7920	<p>BRACKET</p> <table border="1"> <tr> <td><b>LENGTH</b></td> <td><b>FINISH</b></td> </tr> <tr> <td>236"</td> <td>AN</td> </tr> </table>	<b>LENGTH</b>	<b>FINISH</b>	236"	AN
<b>LENGTH</b>	<b>FINISH</b>					
236"	AN					

**NOTE:** Additional finishes available on request.

**FINISHES:** AN-Anodized, WH-White